

malikunmade

makumade

is pleased to launch a new line of hand-formed stoneware tile. In designing the line, form and glaze were primary, producing patterns and field that strike a balance between organic and geometric qualities, calm and excitement.

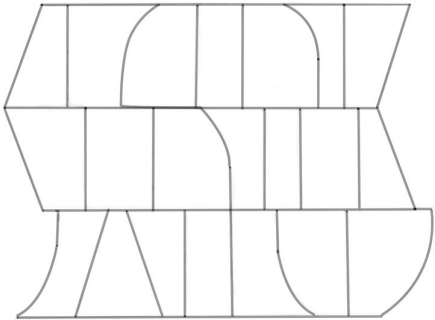
The tiles are cut by hand, forming a square edge and undulating surface. The glazes were developed to enhance these qualities... a matte glaze with a suede-like finish and breaking edge; and a gloss glaze that produces depth and variation similar to stained glass. makumade offers customized services to ensure seamless installations, such as scaling and finished edges.

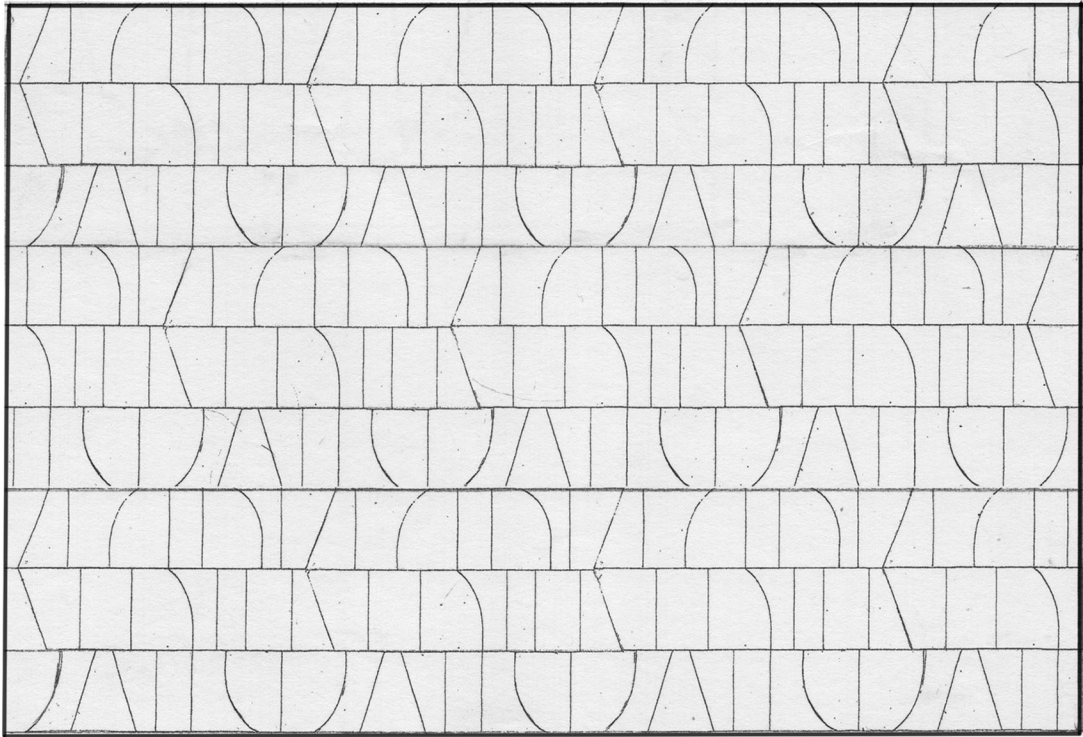




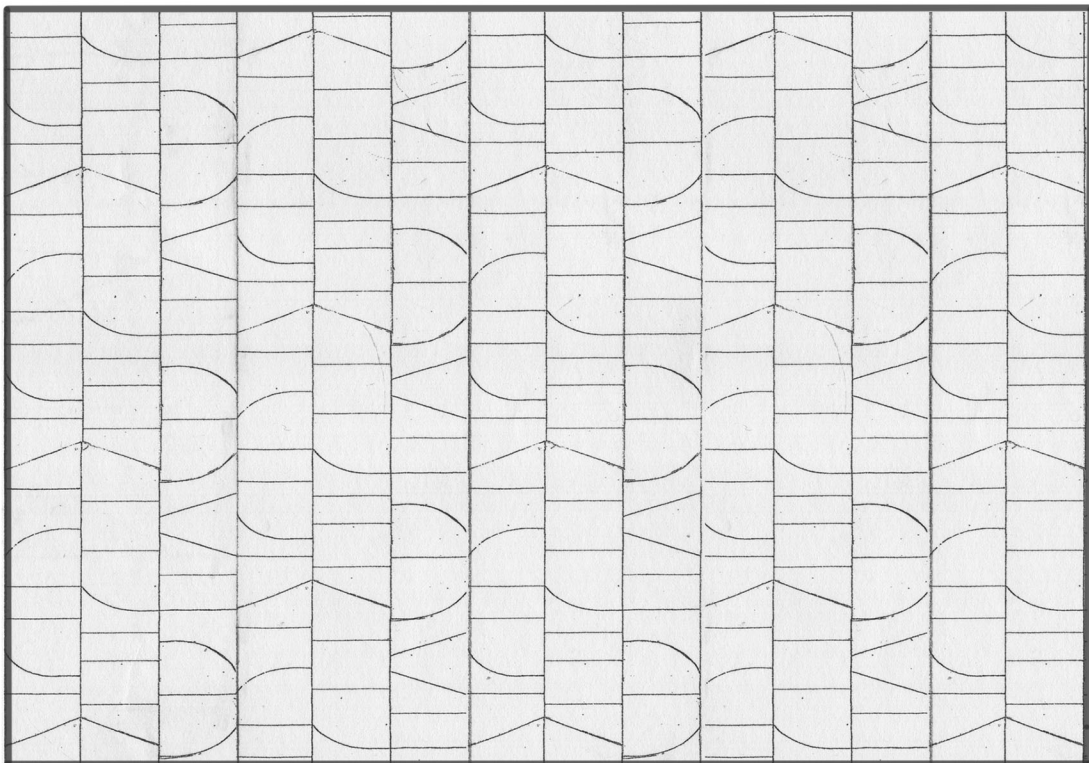
MALAGA

face-taped panels 10.625" X 9.0"
(row + grout joint= 3.0")





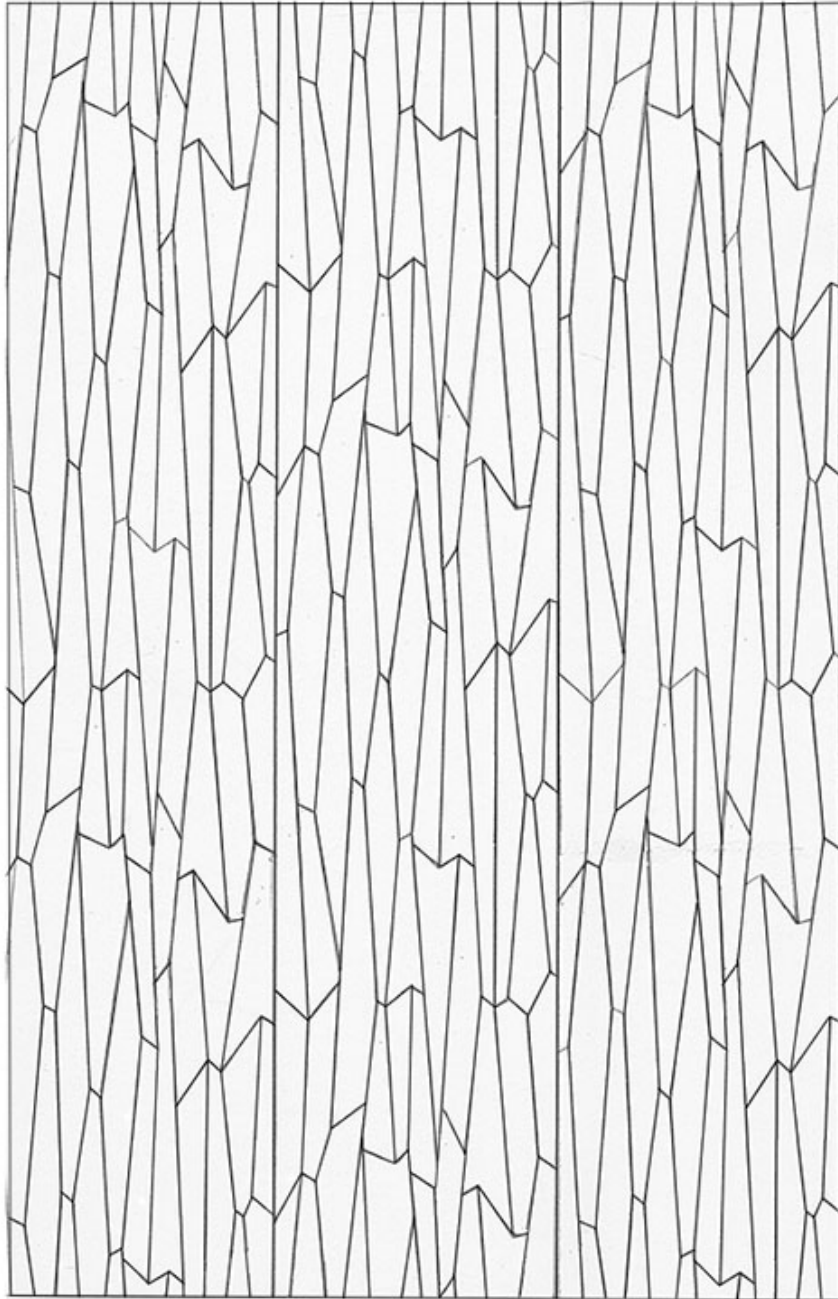
staggered repeat / horizontal orientation



staggered repeat / vertical orientation

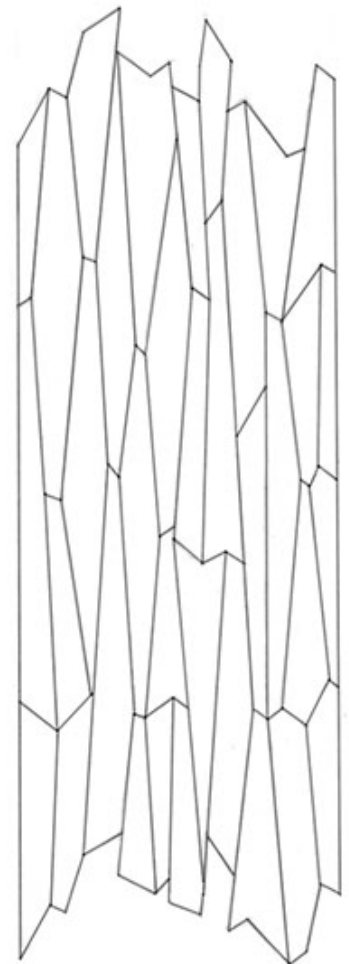


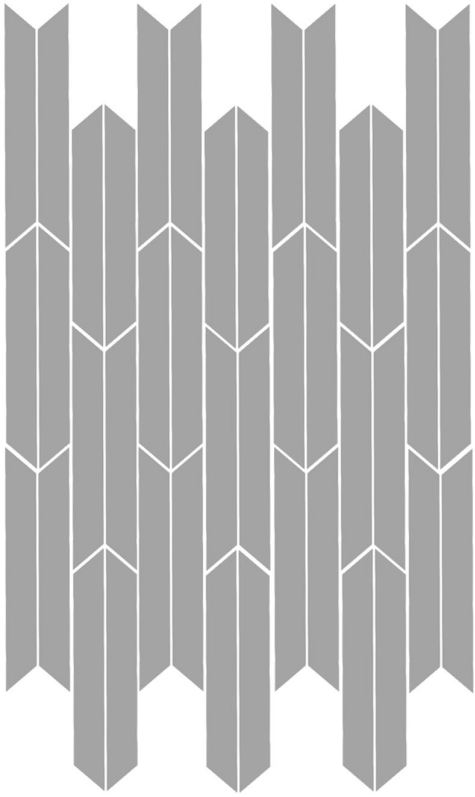
SHARD



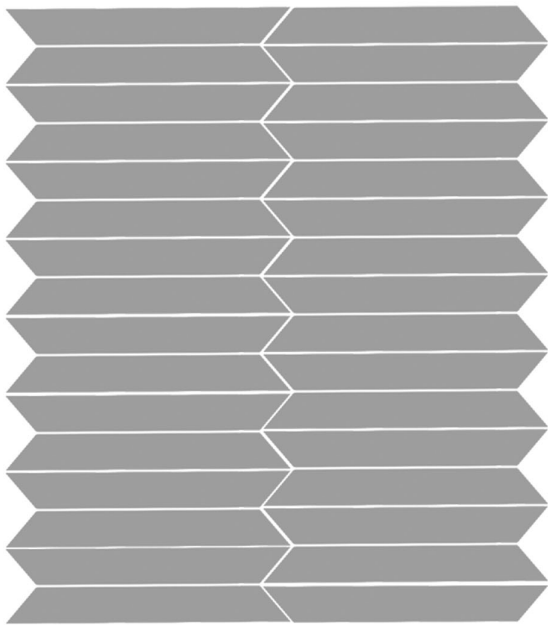
SHARD panel in repeat
image above represents $\approx 28'' \times 43''$

SHARD panel (right) $\approx 9.25'' \times 22''$



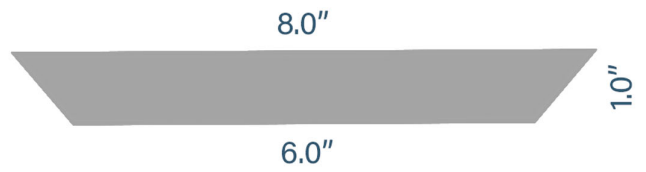


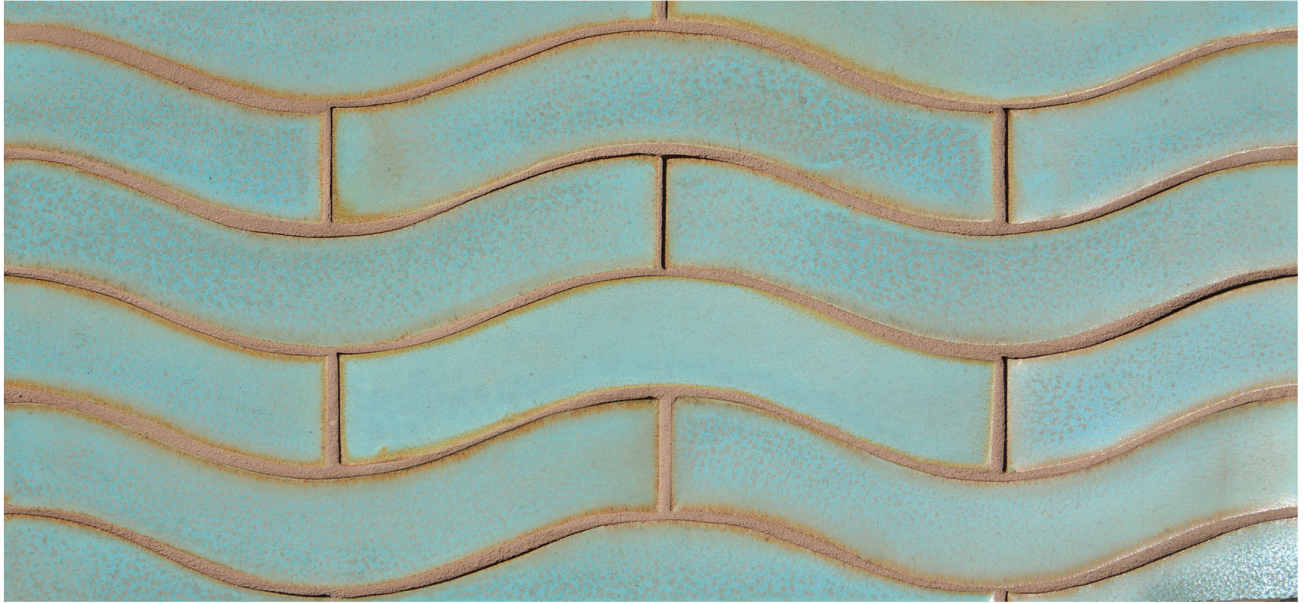
staggered



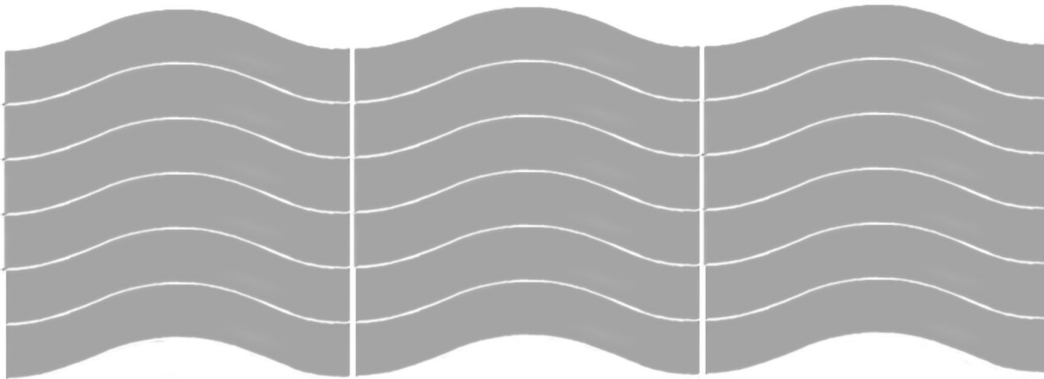
stacked

NOTCH

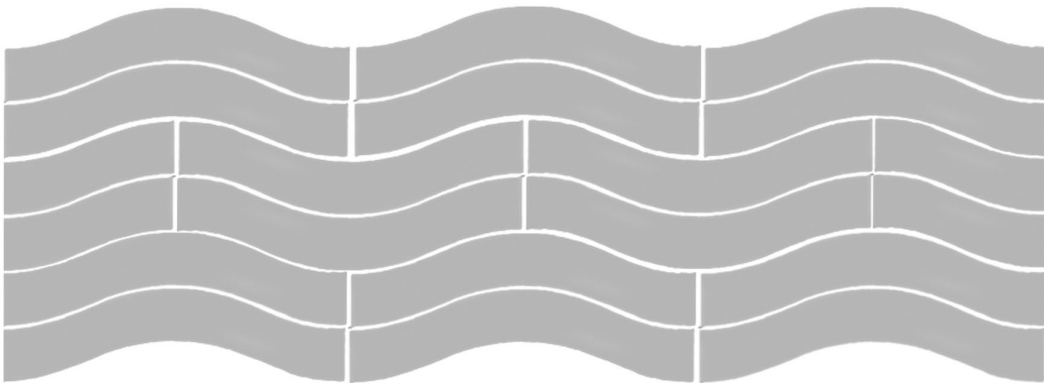




large WAVE



stack

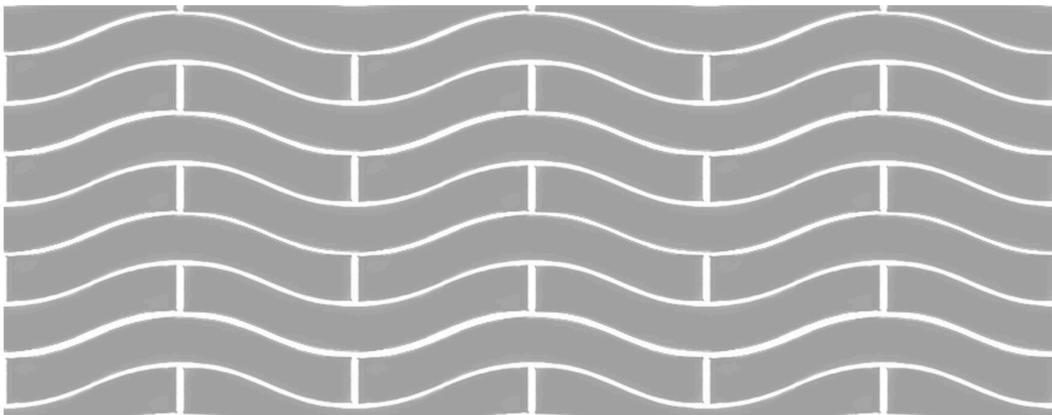


stack & stagger

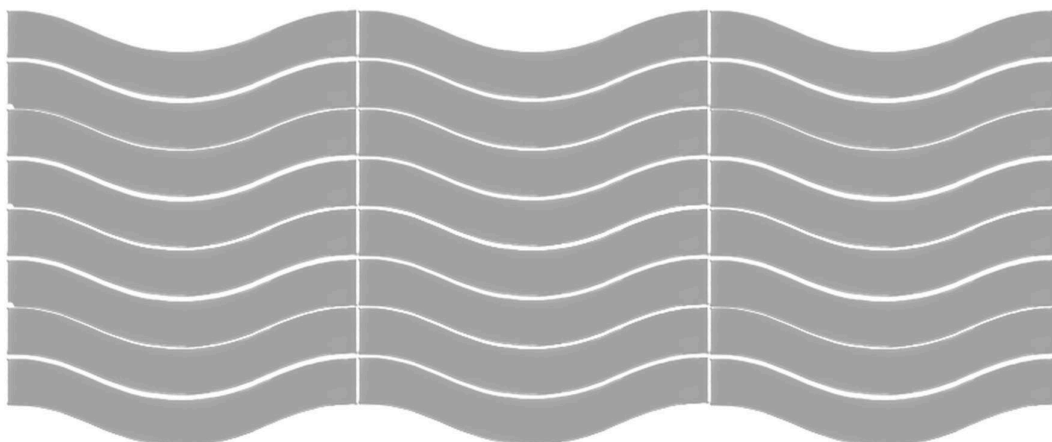




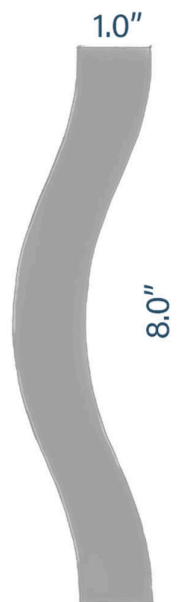
small WAVE



running bond



stacked





WHITE/matte



WHITE/gloss



SNOW/matte



ICING/gloss



GRAY/matte



PALE GRAY/gloss



CREAM/satin



BOTTLE/gloss



HUNTER/gloss



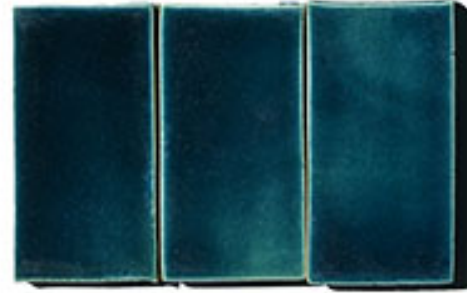
OLIVE/gloss



SPRING/gloss



MARINE/gloss



TEAL/gloss



PINE/gloss



GRASS/matte



SAGE/matte



MINT/satin



PALE AQUA/matte



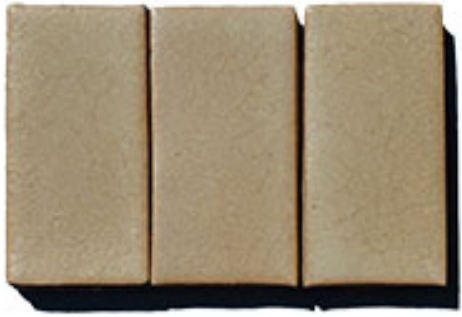
BRIGHT BLUE/matte



TURQUOISE/matte



SKY/matte



MUSHROOM/matte



ROSEWOOD/matte



OCHRE/matte



RIVER/matte



STONE/matte



LICHEN/matte



OATMEAL/matte



CORDOVAN/matte



BRICK/unglazed



BLACKWATCH/matte



TEAL/matte



PAPRIKA/gloss



FLANNEL/matte



AGAVE/matte

